

Front automatic transmission 722.7, BR 168

Notes on complaints relating to shift quality

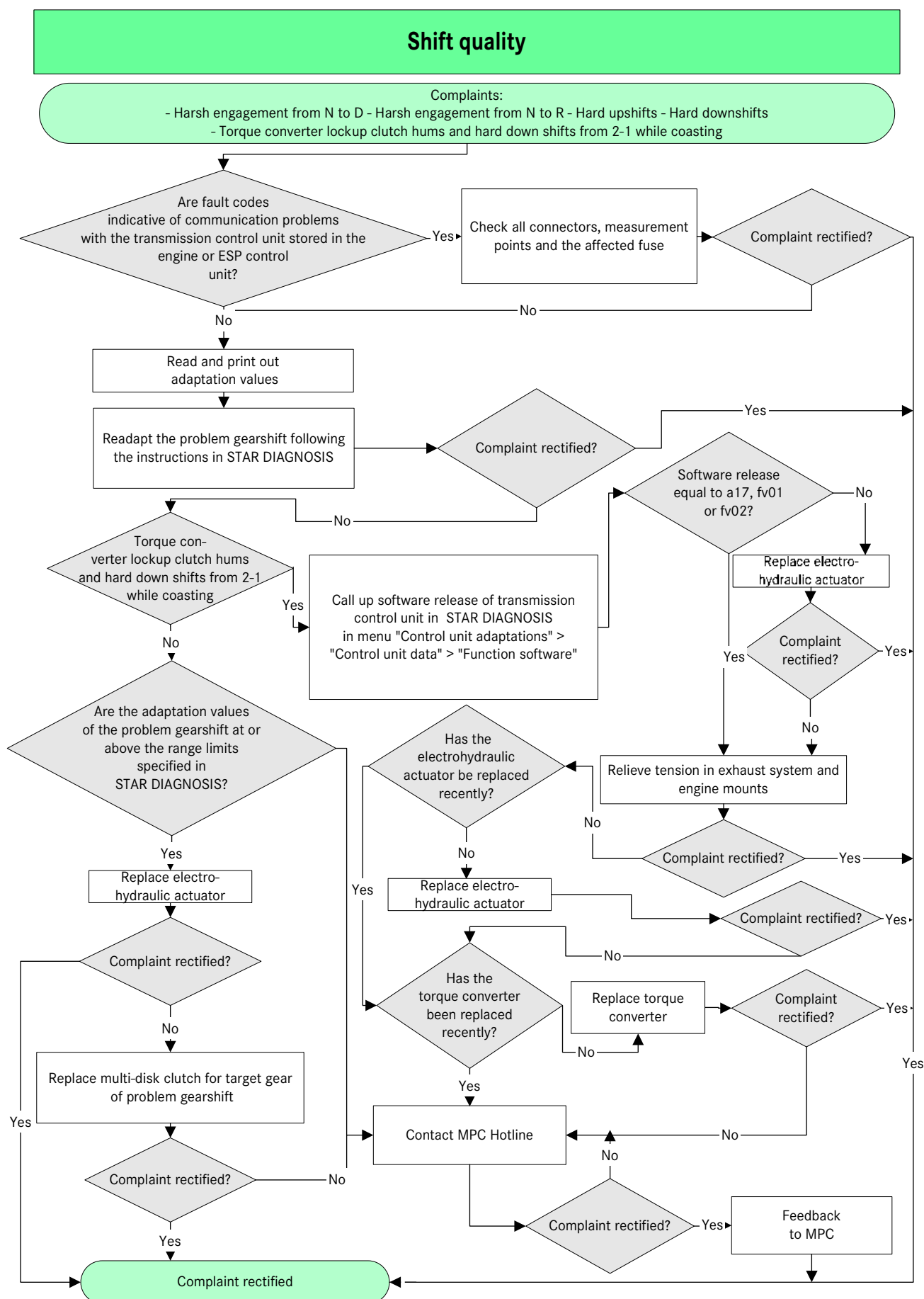
1 Use the flow diagram "Shift quality" for the following complaints:

- Harsh engagement from N to D.
- Harsh engagement from N to R.
- Hard upshifts.
- Hard downshifts.
- Torque converter lockup clutch hums and hard downshifts from 2-1 while coasting.

2 Prerequisites for working through the flow diagram "Shift quality"

- Check oil level in transmission and correct if necessary.
- Check shift cable adjustment and adjust if necessary.
- Process stored faults in the engine control unit or ESP control unit.

Front automatic transmission 722.7, BR 168



Front automatic transmission 722.7, BR 168

Notes on limp-home/no power flow in automatic transmission

1 Use the flow diagram "Limp-home or no power flow in automatic transmission" for the following complaints:

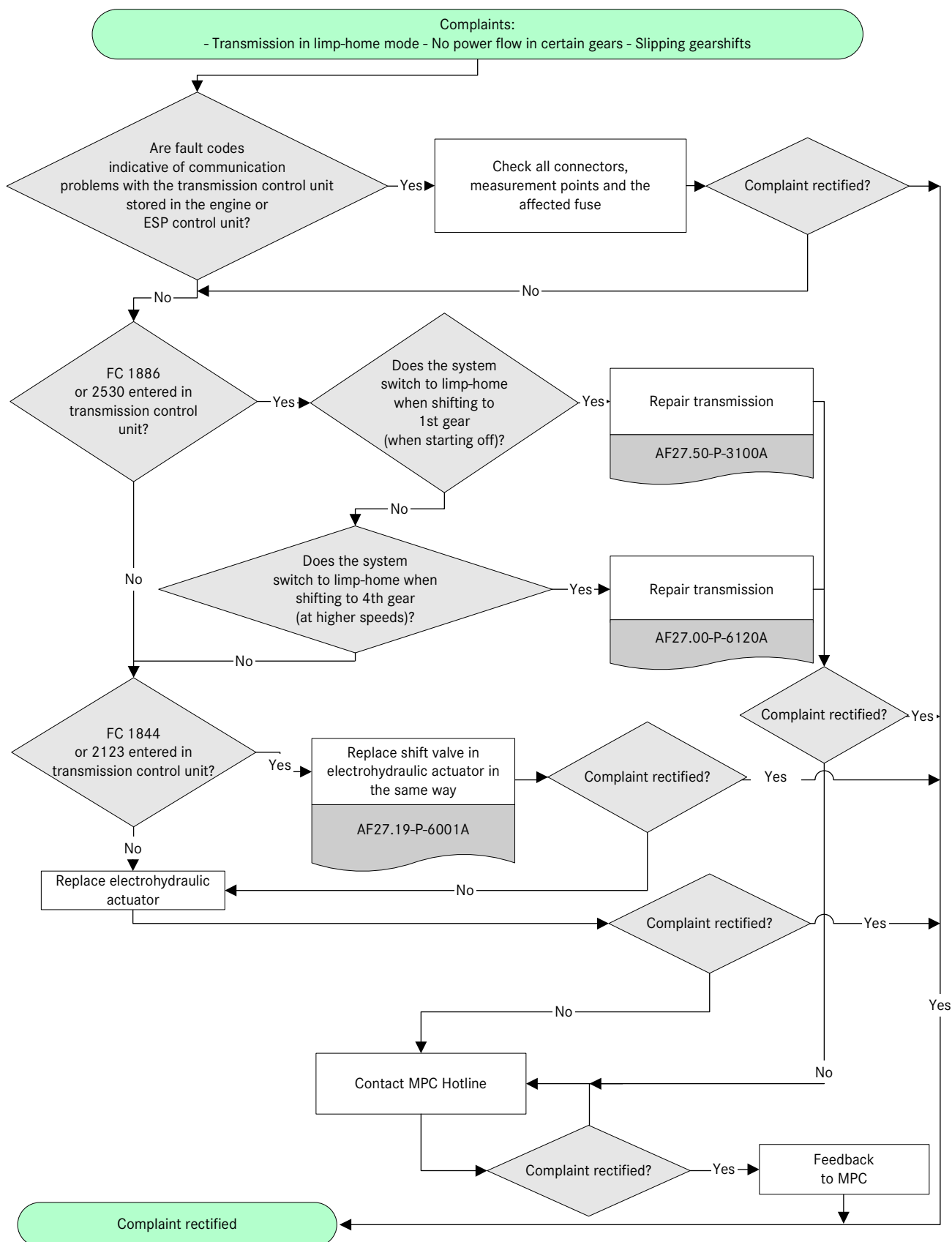
- Transmission in limp-home mode.
- No power flow in certain gears.
- Slipping gearshifts.

2 Prerequisites for working through the flow diagram "Limp-home or no power flow in automatic transmission"

- Check oil level in transmission and correct if necessary.
- Check shift cable adjustment and adjust if necessary.
- Check both input shafts for correct installation (seating in the transmission).
- Process stored faults in the engine control unit or ESP control unit.

Front automatic transmission 722.7, BR 168

Limp-home or no power flow in automatic transmission



Front automatic transmission 722.7, BR 168

Notes on replacing electrohydraulic actuator

1 Part number assignment

When ordering an electrohydraulic actuator, observe the following part number assignments:

- Up to transmission sequence number 77502
⇒ A 168 370 55 06.
- As of transmission sequence number 77503
⇒ A 168 370 54 06.

2 Chassis end number

- Up to chassis end number J 743457, it must be ordered with Index 26.
- As of chassis end number J 743458, it must be ordered without Index 26; and then SCN coding must be performed via STAR DIAGNOSIS.

3 Replacement of an electrohydraulic actuator

- After replacing an electrohydraulic actuator, adaptation of the problem gearshift is absolutely essential if there are still complaints relating to shift quality.